

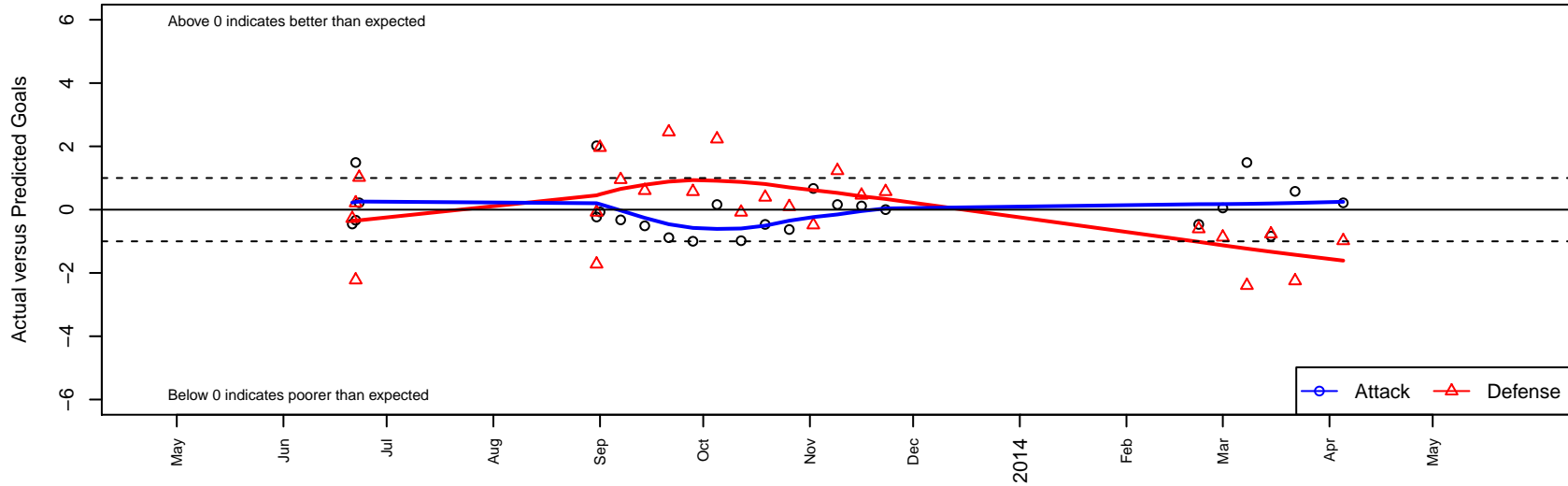
MIFC Fierce G99

Mercer Island FC
 Mercer Island, WA
 G99 total strength=814
 attack=1.26 defense=0.88
 fall league = NPSL G14D1, NPSL Spr G14D1
 alt names used:
 MIFC Fierce '99
 MIFC Fierce Magana
 MIFC Fierce-Magana
 MIFC FIERCE

Venues played:
 Yakima Mid Summer Classic GU14
 Labor Day Cup GU14
 NPSL G14D1
 NPSL Spr G14D1



MIFC Fierce G99
 Dots are actual minus expected GF (blue circles) and GA (red triangles).
 Blue line is smoothed change in attack strength. Red is smoothed change in defense strength.



| | date | home | | away | | venue | pred.home | pred.away |
|-------|-------------|-----------------------------------|---|-------------------------------------|---|--------------------------------|------------------|------------------|
| 16579 | 2014-04-05 | Seattle United S Blue G99 | 2 | MIFC Fierce G99 | 1 | NPSL Spr G14D1 | 1.02 | 0.78 |
| 16393 | 2014-03-22 | MIFC Fierce G99 | 2 | Newport FC Fury G99 | 3 | NPSL Spr G14D1 | 1.42 | 0.75 |
| 16306 | 2014-03-15 | Tracyton Inferno G99 | 3 | MIFC Fierce G99 | 0 | NPSL Spr G14D1 | 2.23 | 0.84 |
| 16190 | 2014-03-08 | Kent United Green G99 | 5 | MIFC Fierce G99 | 2 | NPSL Spr G14D1 | 2.60 | 0.51 |
| 16083 | 2014-03-01 | MIFC Fierce G99 | 1 | Whatcom FC Rangers White G99 | 2 | NPSL Spr G14D1 | 0.95 | 1.13 |
| 16005 | 2014-02-22 | MIFC Fierce G99 | 0 | Seattle United NE Blue G99 | 3 | NPSL Spr G14D1 | 0.47 | 2.39 |
| 15517 | 2013-11-23 | Seattle United Shoreline Blue G99 | 1 | MIFC Fierce G99 | 1 | NPSL G14D1 | 1.57 | 1.00 |
| 15396 | 2013-11-16 | MIFC Fierce G99 | 1 | FC Edmonds Fusion G99 | 2 | NPSL G14D1 | 0.88 | 2.46 |
| 15246 | 2013-11-09 | MIFC Fierce G99 | 1 | Tracyton Inferno G99 | 1 | NPSL G14D1 | 0.84 | 2.23 |
| 15065 | 2013-11-02 | Crossfire Select Pfeifer G99 | 3 | MIFC Fierce G99 | 1 | NPSL G14D1 | 2.52 | 0.33 |
| 14868 | 2013-10-26 | MIFC Fierce G99 | 0 | Seattle United W Blue G99 | 2 | NPSL G14D1 | 0.63 | 2.10 |
| 14681 | 2013-10-19 | MIFC Fierce G99 | 0 | Seattle United NE Blue G99 | 2 | NPSL G14D1 | 0.47 | 2.39 |
| 14467 | 2013-10-12 | Lake Hills Infinity G99 | 1 | MIFC Fierce G99 | 0 | NPSL G14D1 | 0.92 | 0.98 |
| 14266 | 2013-10-05 | Tracyton Inferno G99 | 0 | MIFC Fierce G99 | 1 | NPSL G14D1 | 2.23 | 0.84 |
| 14037 | 2013-09-28 | MIFC Fierce G99 | 0 | Seattle United Shoreline Blue G99 | 1 | NPSL G14D1 | 1.00 | 1.57 |
| 13805 | 2013-09-21 | FC Edmonds Fusion G99 | 0 | MIFC Fierce G99 | 0 | NPSL G14D1 | 2.46 | 0.88 |
| 13589 | 2013-09-14 | MIFC Fierce G99 | 0 | Kent United Green G99 | 2 | NPSL G14D1 | 0.51 | 2.60 |
| 13381 | 2013-09-07 | Crossfire Select Mallalieu G99 | 3 | MIFC Fierce G99 | 0 | NPSL G14D1 | 3.95 | 0.32 |
| 13301 | 2013-09-01 | MIFC Fierce G99 | 1 | Wenatchee Valley United Real FC G99 | 0 | Labor Day Cup GU14 | 1.07 | 1.96 |
| 13263 | 2013-08-31 | Lake Hills Infinity G99 | 1 | MIFC Fierce G99 | 3 | Labor Day Cup GU14 | 0.92 | 0.98 |
| 13265 | 2013-08-31 | MIFC Fierce G99 | 0 | Eastside FC White G99 | 5 | Labor Day Cup GU14 | 0.23 | 3.28 |
| 12246 | 2013-06-23 | Seattle United S Blue G99 | 0 | MIFC Fierce G99 | 1 | Yakima Mid Summer Classic GU14 | 1.02 | 0.78 |
| 12221 | 2013-06-22 | MIFC Fierce G99 | 0 | Spokane Foxes Platinum G99 | 6 | Yakima Mid Summer Classic GU14 | 0.33 | 6.21 |
| 12224 | 2013-06-22 | MIFC Fierce G99 | 2 | Wenatchee Fire Black G99 | 5 | Yakima Mid Summer Classic GU14 | 0.51 | 2.78 |
| 12190 | 2013-06-21 | CWSA Navy G99 | 4 | MIFC Fierce G99 | 0 | Yakima Mid Summer Classic GU14 | 3.72 | 0.45 |